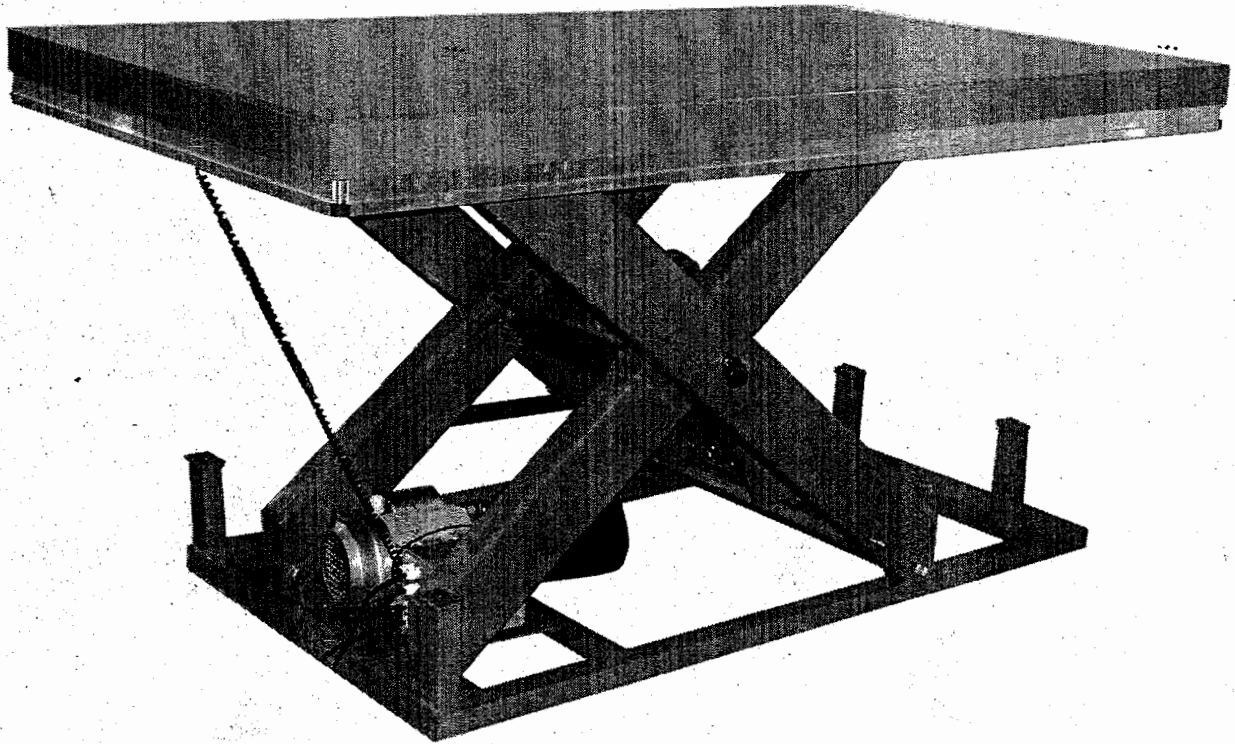


ET SERIES ELECTRIC LIFT TABLE OPERATING INSTRUCTION



Contents

I.Summary

II.Label

III.Product usage and performance feature

IV.Model named way of lift table

V.Product parameter

VI.Install and adjustment

VII.Operating and using

VIII.Maintenance

IX.Attention item

X.Common troubleshooting

XI.Hydraulic theory chart

XII.Electro circuit theory chart

XIII.Axonometrical chart

XIV.Parts detail list

XV.Packing list

XVI.Product Warranty

I. Summary

Yuyao City Jinsheng Machinery Limited company is long-term commitment to electric lift table products R & D, production, business management. Our company has already passed IS9001 quality system and product CE certification, the company has strong technical force and first-class product testing equipment, is a professional manufacturer of lift table.

II.

1000kg 2200lb



Name : Electric Lift Table Model : _____

Max Capacity: _____ kg

Min. Height : _____ mm

Max. Height : _____ mm

Serial No. : _____

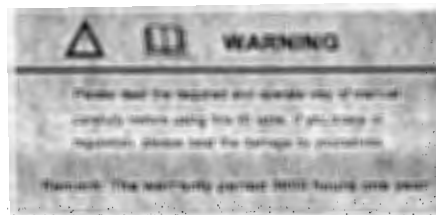
YUYAO JINSHENG MACHINERY CO., LTD ISO9001/CE

Volt: _____ V Motor Power : _____ kw

Hertz: _____ Hz Control Volt: DC24 V

Tel: 0574-82632310 Fax: 0574-82632287

Add: No. 103 Zilong Road Yuyao City, Zhejiang Province, China



III. Product usage and performance feature

ET series electric hydraulic lifting table is a fixed type which can use the manual handling car tools, product from the high position to the ground or the ground plane of the product is lifted to a certain height. It is an ideal equipment for production line and assembly line, which will much improve the production efficiency, reduce the labor intensity of workers, to ensure the production of safe work plays an effective role.

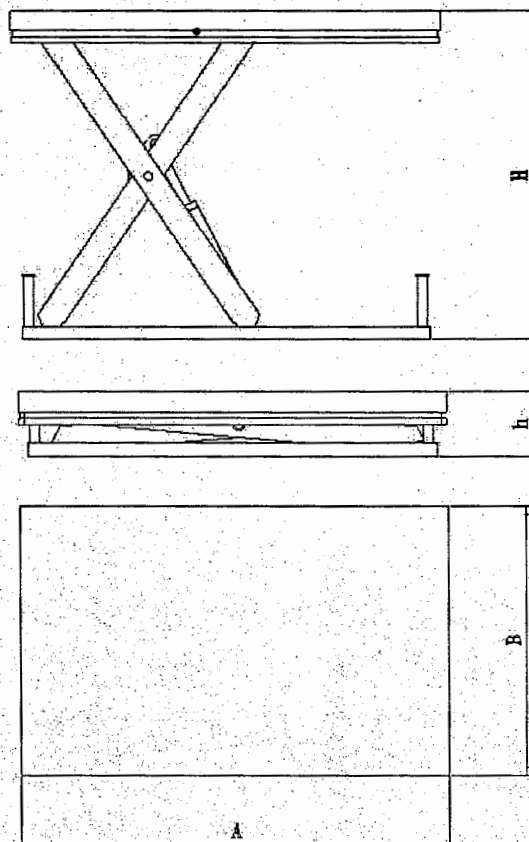
The machine uses high quality high strength steel production. Under the working platform is installed with aluminum alloy safety frame. This model has effective anti-pinch function, has an electrical limit switch device and cylinder mechanical limiting device, the design scheme of double insurance to guarantee the safety of lifting. at the same time hydraulic cylinder design has explosion-proof valve preventing blow out to cause work station rapid decline.

IV. The named way of fixed lift table model

E **T** □ □ □ □ **A**.....
① ② ③ ④ ⑤

- ① Fixed electric
- ② Lift table type
- ③ Capacity
- ④ Number
- ⑤ Special

V. Product parameter



Model	ET1001/1002...	ET2001/2002....	ET2001/2002....
Load Capacity(kg)	1000	2000	4000
Lowest Height(hmm)	205	230	240
Max. Height(Hmm)	1000	1050	1100
Table Dimension(Amm×Bmm)	1300×820	1300×850	1700×1200
	1600×1000	1600×1000	2000×1200
Work Voltage	110V/60Hz	110V/60Hz	110V/60Hz
Motor Power(kw)	1.1	1.5	1.5
Control Voltage(V)	DC24	DC24	DC24

VI. Install and adjustment

1. This product has the basic assembly before shipping. Prohibit use the lift table if it has damage during the transport, and you should immediately contact the dealer. After pass the inspection, you can installed handle and then use it.

- ① Check whether electrical parts have loose or broken situations.
- ② Check oil pipe in the hydraulic system whether it is connected closely, and check the oil whether meets the specified requirements.

2. Testing life table

- ① press the control switch lifting button, to observe electric lift table whether steady rise .
- ② press down button, observation electric lift table lowering situation.

VII. Usage

- ① Lift table for movement, must be placed in the lowest position.
- ② Lift table must ensure the safety situation to carry object on higher positions .
- ③ The heavy goods can't be placed on the lift table for a long time.
- ④ Do not use lift table on the slopes .
- ⑤ Do not use lift table on rainy day at the outdoor

VIII. Maintenance

- a) Periodic preventive maintenance can reduce the wear of products, so that products can normally operate for a long time.
- b) Lifting product to the highest point, check the hydraulic oil is sufficient, if not, add YA-N46 oil or similar hydraulic oil.
- c) Product input voltage must be connected with the lock control cabinet.
- d) Hydraulic oil

1) Add the hydraulic oil

If the fork can not rise to the highest position, you should add the hydraulic oil to recovery the liquid height to lubrication hole less than 2cm, and when adding the hydraulic oil ,the fork must be located in the lowest position;

2) Replace hydraulic oil

The hydraulic oil in hydraulic system to drain, then according to the item1) method to add the hydraulic oil;

3) According following record to select different type of hydraulic oil

Temperature	Hydraulic oil
-5 degree~+45 degree	L-HM68 hydraulic (same as ISOVG68)
-15 degree~+-5 degree	L-HM46 hydraulic (same as ISOVG46)

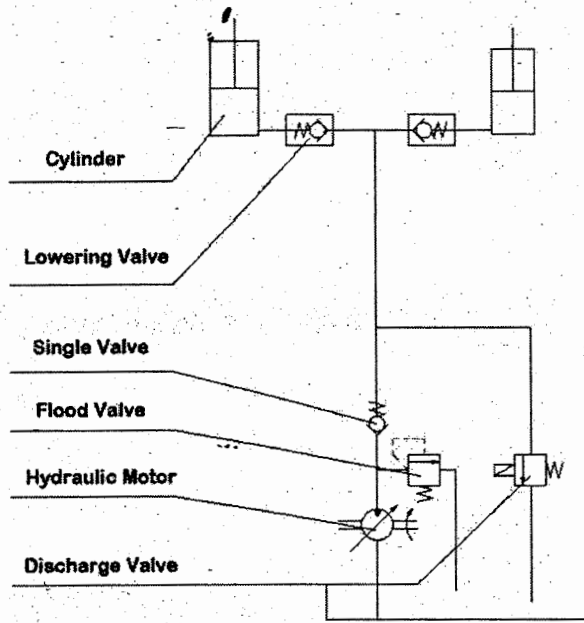
IX. Attention item

- a) Assembly and operation must be carefully read and understand the operating instructions.
- b) Lift table cannot overload, load should be controlled at rated load.
- c) Lift table in carrying situation, can not put hand or foot below table.
- d) When the table is lowering, cannot put feet on the wheel brake pedal.
- e) Load cannot focus placed on the one place of table, and must be placed on the table not less than 80% of the surface area.
- f) When the work table is provided with heavy objects, and at the high position, it can not carry the lift-table.
- g) In order to security, do not use lift table on slope.
- h) Do not allow to install instability or loose packing's load.
- i) It should be checked every day before operation, discover machine faults and electrical damage should be repaired in time.

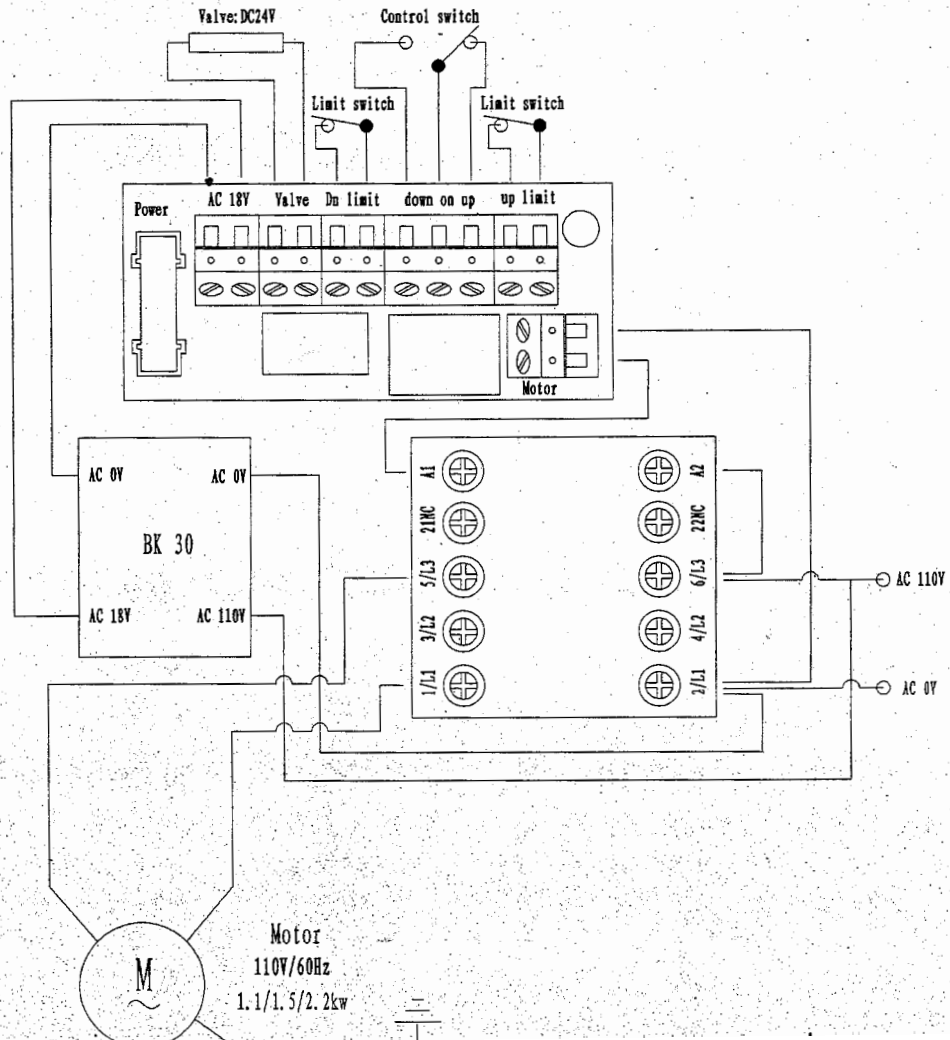
X. Common troubleshooting

Number	Specialist	Reason	Action
1	Table cannot lift	<ol style="list-style-type: none"> 1. Switch failure 2. Oil is not enough 3. Seal parts wear 	Check and repair switch Add oil Replace seal parts
2	Lift table can not lower	<ol style="list-style-type: none"> 1. Switch failure 2. Oil blocking 	Check and repair switch Check and repair oil circuit
3	Motor not work	<ol style="list-style-type: none"> 1. Motor burnout 2. Terminal and plug loose 	Check and repair motor Check Terminal and plug

XI. Hydraulic theory chart

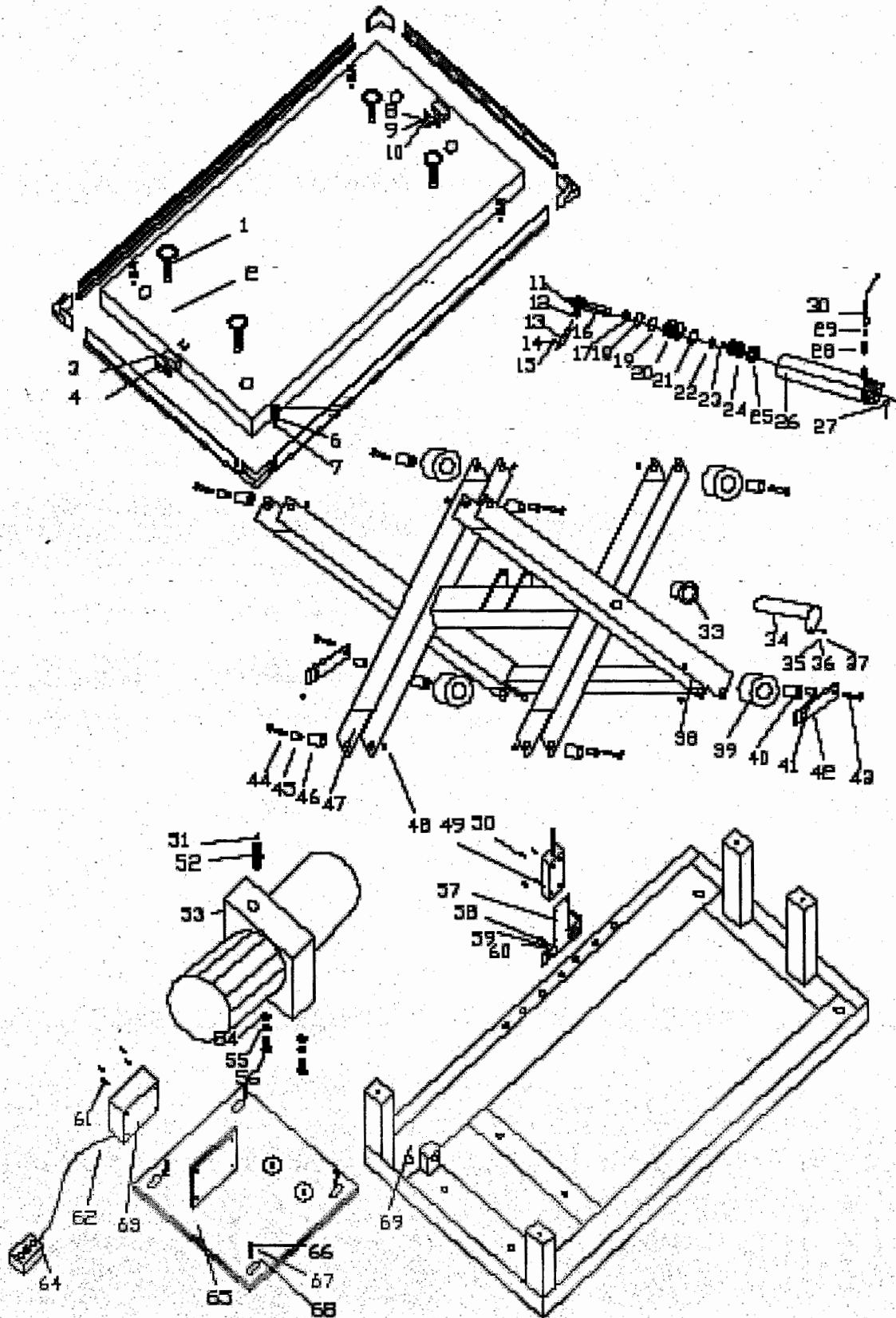


XII. Electro circuit theory chart



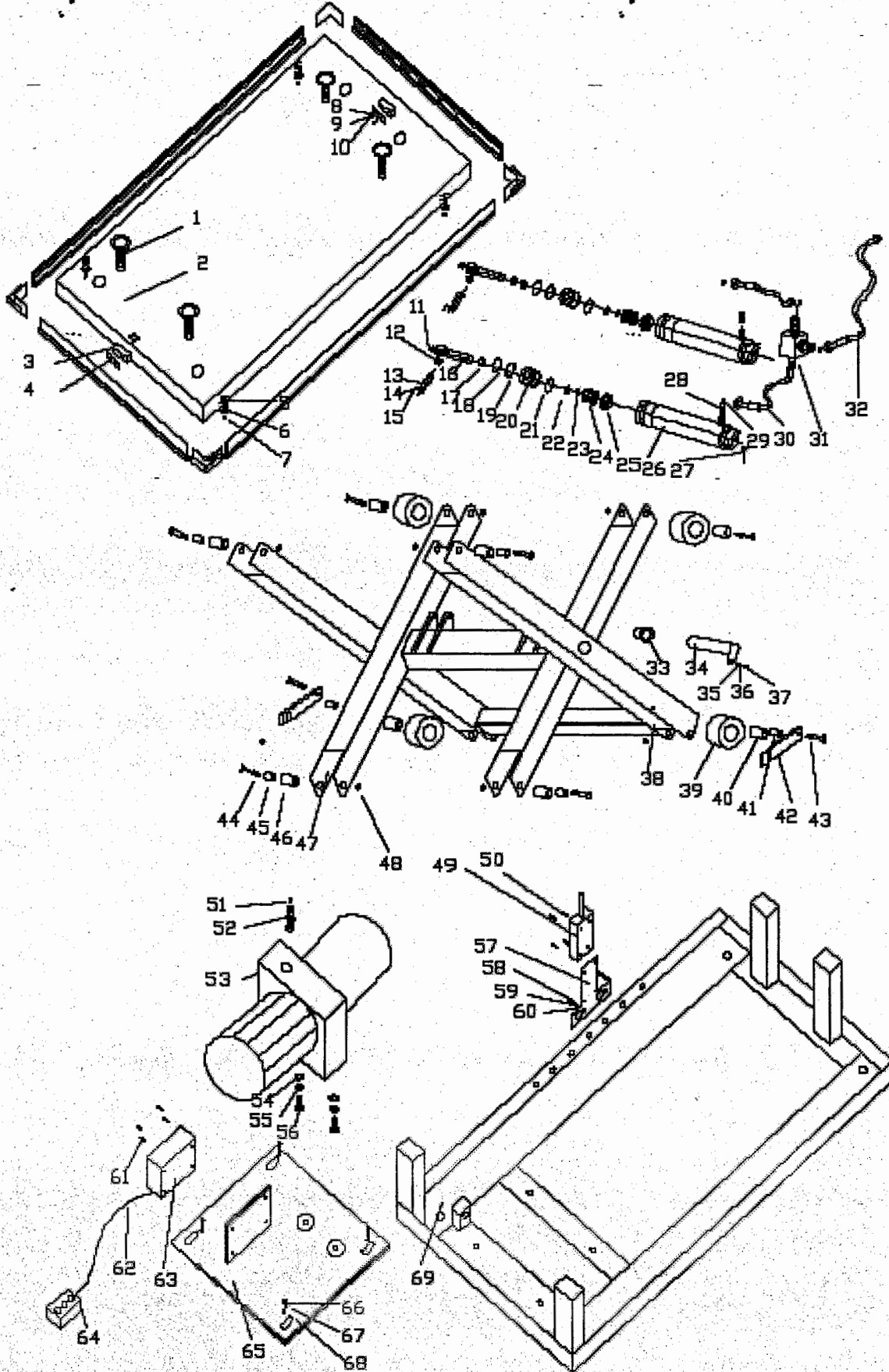
XIII. Axonometrical chart

ET¹⁰⁰¹
1002 ET Electric Lift Table



ET2001
4001

Electric Lift Table



XIV. Parts detail list

Number	Description	Quantity	Number	Description	Quantity
1	Fly ring	4	40	Roll bearing cover	4
2	Table	1	41	Separate cover	2
3	Travel switch	2	42	Limit lever rod	2
4	Travel switch install board	2	43	Out hex cap bolt	2
5	Conical spring	4	45	No oil bearing	4
6	Aluminum alloy angle iron	4	46	Hinge cover	4
7	Set nut M8	4	47	Inner link assembly	1
8	Flat washer Φ4	2	48	Set nut M16	8
9	Spring washer Φ4	2	49	Semicircle screw M4×25	4
10	Semicircle screw M4×30	2	50	Travel Switch	1
11	Oil mouth	2	51	O-ringΦ10×1.9	1
12	Joint bearing	2	52	Oil pipe tie-in	1
13	Cylinder shaft	2	53	Pump motor assembly	1
14	Spring washerΦ8	2	54	Flat washerΦ10	2
15	Out hex cap bolt M8×20	2	55	Spring washer Φ10	2
16	Lift piston rod	2	56	Inner hex cap boltM10×45	2
17	oil sealTC50×62×7	2	57	Install Board	1
18	C-ringΦ95	2	58	Out hex cap screw M6×12	2
19	Hole steel wire C-ringΦ80×3.5	2	59	Flat washer Φ6	2
20	Top nut	2	60	Spring washer Φ6	2
21	O-ringΦ80×3.1	2	61	Semicircle screw M4×12	4
22	O-ringΦ80×3.1	2	62	Wire	1
23	Steel C-ring Φ40×3.2	2	63	Electrical switch box	1
24	Lift piston	2	64	Button switch	1
25	Oil seal DAS80-62	2	65	Pump motor assembly install board	1
26	Cylinder	2	66	Out hex cap screw M8×20	4
27	Lock pin Φ3.5×30	2	67	Spring washer	4
28	Safety valve assembly	2	68	Flat washer	4
29	O-ringΦ10×1.9	5	69	Frame seat	1
30	High pressure oil pipe	2			
31	T tie-in	1			
32	Long High pressure oil pipe	1			
33	No oil bearing	2			
34	Up hinge pin	2			
35	Flat washer Φ8	2			
36	Spring washer Φ8	2			
37	Hex cap bolt M8×20	2			
38	Out link assembly	1			
39	Rolling wheel	4			

XV. Packing Way

Number	Description	Model	Unit	Quantity
1	Fixed motor lift table		table	1
2	Fly ring		pieces	4
3	Manual	English	copy	1

XVI. Product Warranty

Warranty card

The machine name: _____

Product model: _____

Manufacturing date: _____

Purchase date: _____

Guarantee date: _____ to _____

Quality of this machine warranty for six months : must use normal range: motor, oil pump, oil pressure, oil cylinder ect; battery warranty use for six months.

Artificial or natural disaster damage is not in the warranty:

1 disassemble the machine damage by personal.

2Not according to the performance of the machine to normal operation caused damage

3.The earthquake, fire and other natural disasters cause damage